

A

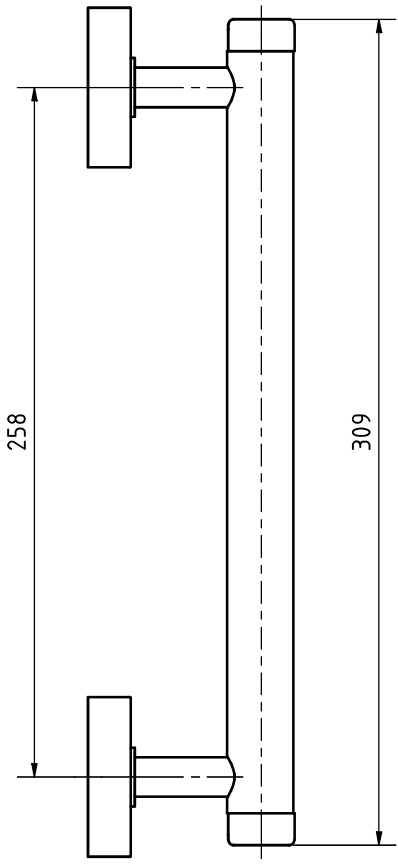
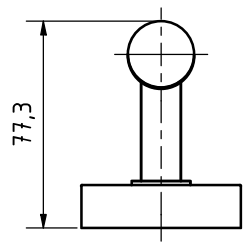
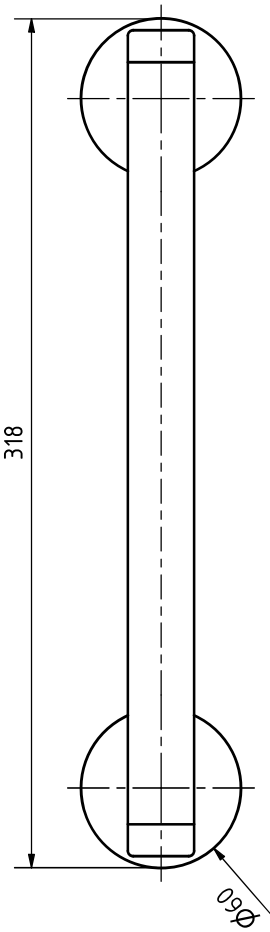
B

C

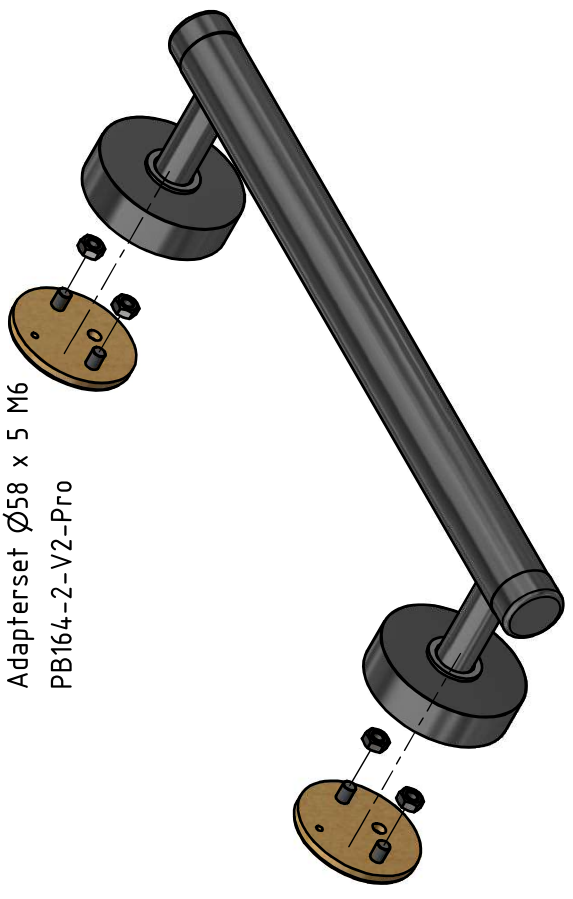
D

6
5
4
3
2
1

6
5
4
3
2
1



Adapterset $\varnothing 58 \times 5 \text{ M6}$
PB164-2-V2-Pro



fnwb ID:
PDK - Satin-polished
PDK222 (Z) - 13844 (124.01)

All dimensions in this drawing are nominal dimensions (in mm) and have tolerances
Alle Maße in dieser Zeichnung sind Nennmaße (in mm) und haben Toleranzen